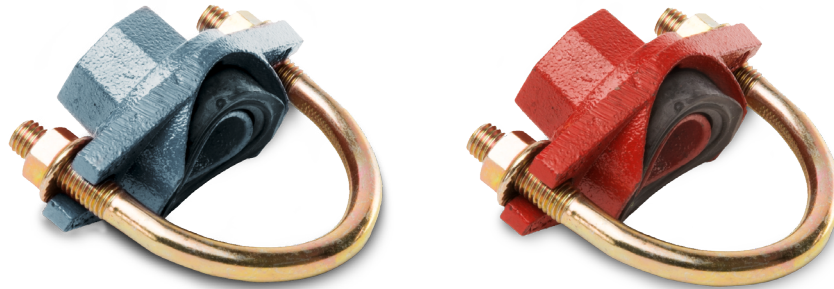
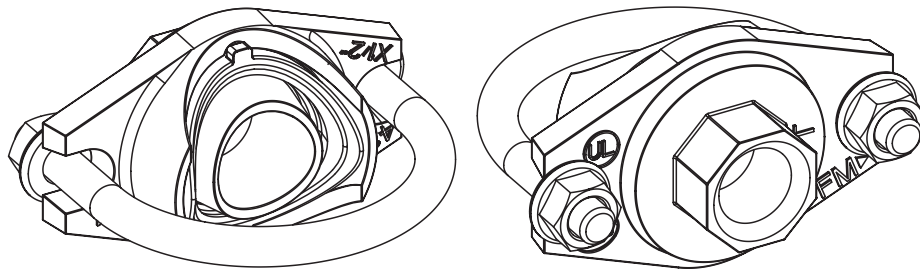


Size range: 1-½" - 3-1"

THREADED OUTLET, BSPT



Sprinkler tees are designed for direct connection of sprinkler heads.



Material specifications

Housing: ductile iron conform to ASTM A536 GR65-45-12.

Coating:

- Hot dip galvanised.
- Red paint coating RAL 3000, EPD epoxy coating (any other colour on request).

Rubber gaskets: EPDM gaskets dispose of the international certifications and have undergone the aging test at 110°C/230°F for a period of 45 days/1080 hours and the frozen test at -40°C/-40°F for a period of 4 days/96 hours.

Bolts and nuts: see technical datasheet bolts and nuts.

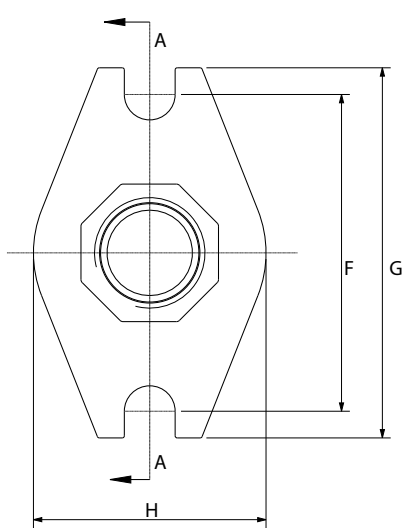
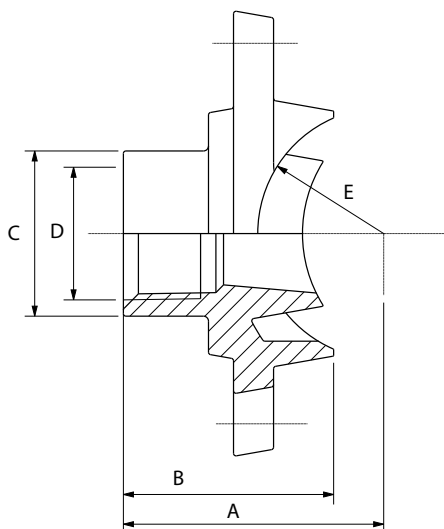


Working pressure

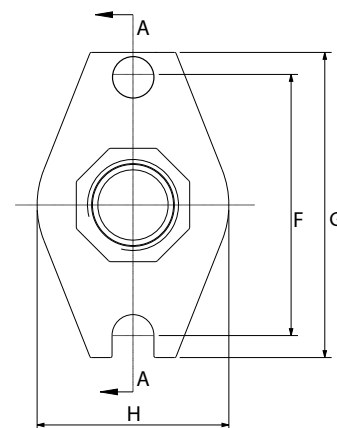
2,07 MPa / 20,7 bar / 300 psi.

Approvals

- FM approved to FM standard 1920.
- UL 213 listed.
- CNBOP approved.



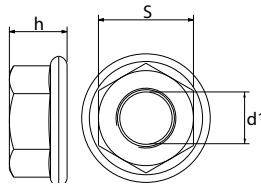
Please note that the following design is used for
2" U-bolt sprinkler tees:



Reference		Nominal size Run - reducing outlet		Pipe Ø O.D.	U-bolt sprinkler tee dimensions								Hole cut	Bolt size	Socket wrench	Bolt torque	Weight	Marking
Red	Galva	NPS inch	DN mm	mm	A mm	B mm	C mm	D inch	E mm	F mm	G mm	H mm	mm	d1xL mm	mm	Nm	kg	
GSTR	GSTG	1-½	25-15	33,7	30	30	29	½	17,70	60	74	44	24+1	M8x44	13	25-30	0,20	041 ¹⁾
GSTR	GSTG	1-¾	25-20	33,7	46	28,5	33	¾	17,70	60	74	44	24+1	M8x44	13	25-30	0,24	041 ²⁾
GSTR	GSTG	1¼-½	32-15	42,4	50	46	28	½	22,20	76	89	56	30+1	M10x78	15	44-54	0,47	041
GSTR	GSTG	1¼-¾	32-20	42,4	53	49	33	¾	22,20	76	89	56	30+1	M10x78	15	44-54	0,46	041
GSTR	GSTG	1¼-1	32-25	42,4	58	54	40	1	22,30	76	89	56	30+1	M10x78	15	44-54	0,48	041
GSTR	GSTG	1½-½	40-15	48,3	49	39	28	½	25,15	76	89	56	30+1	M10x78	15	44-54	0,40	041
GSTR	GSTG	1½-¾	40-20	48,3	52	42	33	¾	25,16	76	89	56	30+1	M10x78	15	44-54	0,40	041
GSTR	GSTG	1½-1	40-25	48,3	57	45	40	1	25,16	76	89	56	30+1	M10x78	15	44-54	0,41	041
GSTR	GSTG	2-½	50-15	60,3	63	36,6	28	½	31,20	78	101	56	30+1	M10x92	15	44-54	0,46	041
GSTR	GSTG	2-¾	50-20	60,3	63	39,6	33	¾	31,20	78	101	56	30+1	M10x92	15	44-54	0,46	041
GSTR	GSTG	2-1	50-25	60,3	66	44,6	40	1	31,20	78	101	56	30+1	M10x92	15	44-54	0,47	041
GSTR	GSTG	2½-½	65-15	73,0	64	33,3	28	½	37,50	88,3	111	56	30+1	M10x108	15	44-54	0,56	041
GSTR	GSTG	2½-¾	65-20	73,0	66	36,3	33	¾	37,50	88,3	111	56	30+1	M10x108	15	44-54	0,57	041
GSTR	GSTG	2½-1	65-25	73,0	72	41,3	40	1	37,50	88,3	111	56	30+1	M10x108	15	44-54	0,61	041
GSTR	GSTG	2½-½	65-15	76,1	64	33,3	28	½	37,50	88,3	111	56	30+1	M10x108	15	44-54	0,56	041
GSTR	GSTG	2½-¾	65-20	76,1	66	36,3	33	¾	37,50	88,3	111	56	30+1	M10x108	15	44-54	0,57	041
GSTR	GSTG	2½-1	65-25	76,1	72	41,3	40	1	37,50	88,3	111	56	30+1	M10x108	15	44-54	0,61	041
GSTR	GSTG	3-1	80-25	88,9	80,5	41,3	40	1	45,45	105,8	128	56	30+1	M10x135	15	44-54	0,60	041 ²⁾

¹⁾ No FM- and UL-approval / ²⁾ No FM-approval.

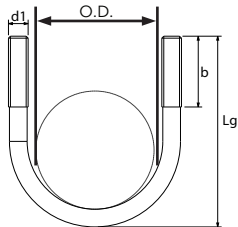
	M10	M8
h	10	8
s	15	13



U bolt sprinkler tee
BST
1-1/2
Hole cut dimension 24(+1mm)

LABEL EXAMPLE

- * Please note that the **correct hole cut dimension** is mentioned:
- on the label which is attached to the product itself
 - on the document called 'Hole cut dimensions', which is added to each delivery from our warehouse Piping Logistics, Belgium. This document is attached to the outside of the first box in a plastic pouch with reference 'Documents enclosed'



	DN32-40	DN50	DN25
d1	M10	M10	M8
b	32	38	22
Lg	78	93	44

GENERAL INFO

- Installers should be trained or experienced to install and understand the product.
- Read and understand all technical datasheets and installation instructions before attempting to install, remove or adjust any Profit piping products.
- Depressurise and drain the sprinkler installation system before attempting to install, remove or adjust any Profit piping products.
- Never work on piping systems that are pressurised and / or filled with water.
- Piping Logistics reserves the right to change specifications, designs and / or standard equipment without notice and without incurring in any obligations.
- Use the necessary Personal Protection Equipment (PPE) to avoid personal injury (helmet, safety shoes and goggles, Profit gloves).



- Profit red coated products are intended for piping with indoor application (EN 12944-2 corrosivity category C1 & C2). For outdoor installations near the sea (corrosivity category C3) we advise the use of our hot dip galvanised couplings and fittings. For application in corrosivity category C4 (higher salinity climate) or higher, please contact info@pipinglogistics.eu.
- Pressure ratings listed for fire sprinkler applications are CWP (cold working pressure) or MWP (maximum working pressure) at a maximum service temperature of 66°C. This rating may occasionally differ from maximum working pressure listed and / or approved by UL and / or FM, as testing conditions and test pipes can differ. For more information, please contact info@pipinglogistics.eu.
- Maximum working pressure listed is the total of internal and external pressures based on standard weight (ANSI) steel pipe and standard roll or cut groove in accordance with Profit specifications. For more information, please contact info@pipinglogistics.eu.
- For one time field test only, the maximum joint working pressure may be increased by 150% the figure shown.
- Independent technical datasheet for bolts and nuts and rubber gaskets.

Failure to follow these instructions could result in death or serious injury and property damage.

We advise to always store our products in closed and dry environments, the products do not need any specific maintenance once installed on an above ground sprinkler installation.

REVISION TABLE

Date	△	Notes
29/02/2024	A	Page 2 - Inch is added in table.
03/09/2025	B	Page 2 - Correction of the socket wrench of size 1"-3/4".
03/09/2025	C	Page 1 - New notation of the working pressure.
09/09/2025	D	Page 2 - Correction of the hole cut of size 1"-3/4".